

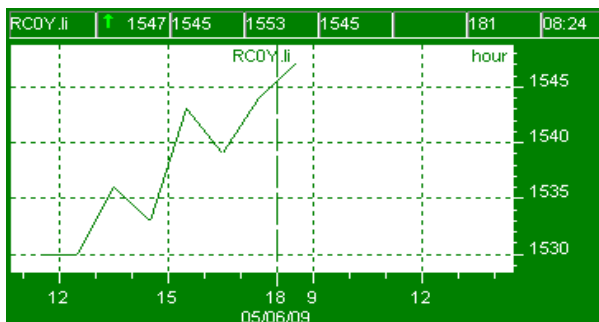
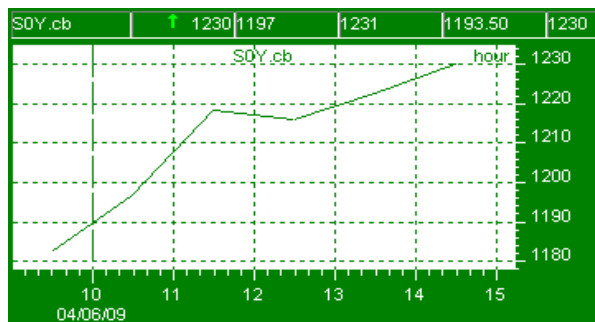
05.06.2009 09:31

LIFFE - London International Financial Futures Exch.		
Name	Exp. date	Price
COCOA NO 7	7/31/09	1.751,00 £/t
ROBUSTA COFFEE	7/31/09	1.547,00 \$/t
WEATH	7/23/09	123,75 p/t
WHITE SUGAR NO 5	7/16/09	442,70 c/t

ICE - Intercontinental Exchange US		
Name	Exp. date	Price
COCOA	7/16/09	2.727,00 \$/t
COFFEE C	7/21/09	139,20 c/lb
COTTON #2 TAS	7/9/09	2,00 c/lb
SUGAR NO 11	6/30/09	15,13 c/lb
FCOJ-A OR. JUICE	7/13/09	91,60 c/lb

CBOT - Chicago Mercantile Exchange		
Name	Exp. date	Price
CORN	7/14/09	4.474,00 c/bu
OATS	7/14/09	2.634,00 c/bu
RICE ROUGH	7/14/09	12,74 \$/cwt
SOYBEAN MEAL	UnDef	398,50 c/lb
SOYBEAN OIL	7/14/09	40,30 c/lb
SOYBEANS	UnDef	12.300,00 c/bu
WEATH	7/14/09	6.360,00 \$/bu

CME - Chicago Mercantile Exchange		
Name	Exp. date	Price
FEEDER CATTLE	8/27/09	96,63 c/lb
LIVE CATTLE	6/30/09	80,03 c/lb
LEAN HOGS	6/12/09	57,25 c/lb
PORK BELLIES	7/28/09	62,95 c/lb
LUMBER	7/15/09	211,00 \$/mbf

**Robusta Coffee (LIFFE)****Soybeans (CBOT)****India's Food Corp Local Wheat Purchases Cross 24M Tons-Source**

NEW DELHI (Dow Jones)--Local wheat purchases between April 1-June 4 by state-run Food Corporation of India hit a fresh record high of 24.05 million metric tons, a government official said Friday. The federal government's local wheat purchasing target is fixed at 24.40 million tons for 2008-09. Food Corp bought 22.6 million tons of wheat in 2007-08. Food Corp has bought nearly 95% of the wheat sold by farmers in the structured local markets, as a high state-set purchase price of INR10,800/ton has discouraged private traders. The company's wheat purchases are 10.7% higher compared with 21.72 million tons in the same period last year.

**India 08-09 Coffee Output To Fall 15-20% On Weather,Pests-Exec**

MUMBAI (Dow Jones)--India's 2008-09 coffee output will likely fall by about 15%-20% short of an earlier government estimate on adverse weather conditions and the berry-borer pest menace, according to industry officials. The most recent government output estimate for the crop year ending Sept. 30 was 262,300 metric tons. "The coffee berry borer has impacted almost all the growing districts," said A.S. Shankare Gowda, a member of the Coffee Board of India and a large grower. "Overall around 13,000 hectares has been impacted, mostly in Karnataka." India's total coffee area is estimated to be around 400,000 hectares. Karnataka is the country's largest coffee producing state and accounts for 70% of total output. Kerala and Tamil Nadu are the other major producing regions.

**WSJ(6/5)UPDATE:Commodities Report:Oil Prices And The Recovery**

NEW YORK -- As oil prices have increased, so have concerns the steady climb will snuff out an economic recovery. But analysts say oil prices have to soar well past \$70 a barrel before an impact would register. Light, sweet crude oil for July delivery set a fresh seven-month high on Thursday, rising \$2.69, or 4.1%, to \$68.81 a barrel on the New York Mercantile Exchange. Prices have roughly doubled since February, as more and more investors have signed on to the idea that major economies will soon begin to pull out of their slump. The mere hint of promising developments in the U.S. housing market or the Chinese manufacturing sector has been enough to send oil soaring. Goldman Sachs Group analysts this week said they see the oil market returning to "energy crisis" footing once economies are on the path to recovery, with shortages by the second half of next year and prices hitting \$95 at the end of 2010. The bank also increased its end-of-2009 price forecast 31% to \$85 a barrel. The oil rally of the past few months has led to higher prices at the pump. The more consumers pay to fill their tanks, the less they have to spend on other goods that would resuscitate the wider economy.