

## ROTTERDAM SOYMEAL PRICES IN US\$/mt

Origin	Quality	Terms	Afl.	Net Change	Jun '09	Net Change		
ARGENTINE	45-46%	CIF Rotterdam	443,00	-7,00	443,00	-7,00		
Origin	Quality	Terms	Afloat	Net Change	Jun '09	Net Change		
BRAZILIAN	48%	CIF Rotterdam	454,00	-6,00	450,00	-7,00		
SOY PELLETS	Quality	Terms	Jul '09	Net Change	Aug '09	Net Change		
	49%; max 3.5 % fibre, 13.5% moisture	FOB Rotterdam- Amsterdam	470,00	1,00	463,00	-5,00		

## SUNFLOWERSEED MEAL PELLETS IN US\$/mt

Origin	Quality	Terms	Afl	Net Change	Jul-Avg '09	Net Change		
ARG/URU	37-38%	FOB Rotterdam	144,00	-3,00	148,00	-2,00		

## ROTTERDAM SOYBEAN PRICES IN US\$/mt, CIF Rotterdam

Origin	Terms	Jun '09	Net Change	Jul '09	Net Change		
USA	U.S Gulf CIF Rotterdam	492,50	-10,00	491,75	-10,00		
Origin	Terms	Jun '09	Net Change	Jul '09	Net Change		
BRAZIL	Northern ports CIF Rotterdam	493,50	-8.025,00	492,50	-7,50		
Origin	Terms	Jun '09	Net Change	Jul '09	Net Change		
ARGENTINA	CIF Rotterdam	498,50	-1,75	497,50	-1,75		

## ROTTERDAM VEGETABLE OIL PRICES IN US\$/mt

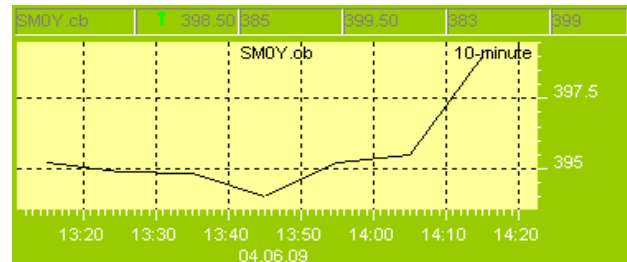
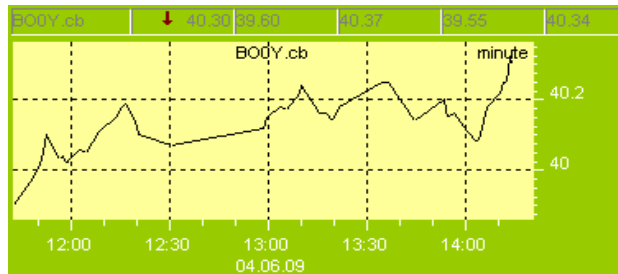
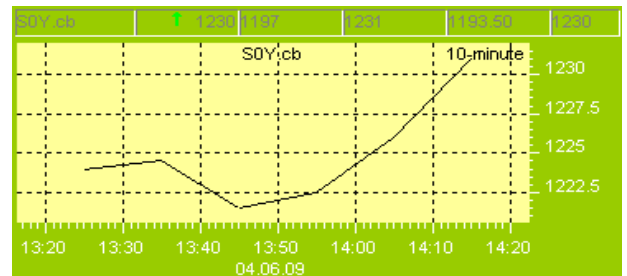
SOYOIL EUR/mt	Origin/Quality	Terms	Jun-Jul '09	Net Change	Aug-Oct '09	Net Change		
	Dutch 0,75% FFA	FOB mill	648,00	-12,00	655,00	-10,00		
SOYOIL EUR/mt	Origin/Quality	Terms	Jun-Jul '09	Net Change	Aug-Oct '09	Net Change		
	German Refined	FOB Hamburg	699,00	-12,00	710,00	-12,00		
SUNFLOWER OIL	Origin/Quality	Terms	Jul-Sep '09	Net Change	Oct-Dec '09	Net Change		
	EU 2-3% FFA	FOB north European ports	945,00	-25,00	980,00	unch		
RAPESEED OIL EUR/mt	Origin/Quality	Terms	Jul '09	Net Change	Aug-Oct '09	Net Change		
	Dutch max2%FFA	FOB mill	670,00	unch	690,00	10,00		
RAPESEED OIL EUR/mt	Origin/Quality	Terms	Jul '09	Net Change	Aug-Oct '09	Net Change		
	German Refined	FOB Hamburg	730,00	unch	740,00	-10,00		

## ROTTERDAM VEGETABLE OIL PRICES IN US\$/mt

GROUNDNUT OIL	Origin/Quality	Terms	Jun '09	Net Change				
	any 2-3% FFA	CIF Rotterdam	1.160,00	unch				
LINSEED OIL	Origin/Quality	Terms	Jun '09	Net Change				
	any crude	ex-tank Rotterdam	640,00	unch				
CASTOR OIL	Origin/Quality	Terms	Jun '09	Net Change				
	any 1% FFA	ex-tank Rotterdam	1.250,00	unch				
TUNG OIL	Origin/Quality	Terms	Jun '09	Net Change				
	any	ex-tank Rotterdam	2.590,00	unch				

ROTTERDAM PALM OIL PRICES IN US\$/mt							
PALM OIL	<b>Origin/Quality</b>	Terms	<b>Jul-Sep '09</b>	Net Change	<b>Oct-Dec '09</b>	Net Change	
	Mal/Sumcrude (max 5% FFA)	CIF Rotterdam	780,00	-10,00	775,00	-10,00	
PALM OIL	<b>Origin/Quality</b>	Terms	<b>Jun '09</b>	Net Change	<b>Jul-Sep '09</b>	Net Change	
	Mal/Sumatran refined	FOB Malaysia	785,00	7,50	777,50	-10,00	
PALM OLEIN	<b>Origin/Quality</b>	Terms	<b>Jun '09</b>	Net Change	<b>Jul-Sep '09</b>	Net Change	
	RBD (max 1% FFA)	FOB Malaysia	805,00	-7,50	797,50	-10,00	
STEARIN	<b>Origin/Quality</b>	Terms	<b>Jun '09</b>	Net Change			
	(Poram), RBD	FOB Malaysia	760,00	-10,00			
PALM FATTY ACID DISTILLATE	<b>Origin</b>	Terms	<b>Jun '09</b>	Net Change			
		FOB Malaysia	760,00	-10,00			
PALM KERNEL OIL	<b>Origin/Quality</b>	Terms	<b>Jun-Jul '09</b>	Net Change	<b>Jul-Aug '09</b>	Net Change	
	Mal/Indo max 5% FFA	CIF Rotterdam	815,00	-10,00	815,00	-10,00	
COCONUT OIL	<b>Origin/Quality</b>	Terms	<b>Jun-Jul '09</b>	Net Change	<b>Jul-Aug '09</b>	Net Change	
	Phil/Indo 3-4% FFA	CIF Rotterdam	840,00	-10,00	825,00	-10,00	

CBOT Futures	Last Price
SOYBEANS	12300,00 c/bu
SOYBEAN OIL	40,30 c/lb
SOYBEAN MEAL	398,50 \$/st



CME - Chicago Mercantile Exchange
CBOT-Chicago Board of Trade
1 lb = 0,453592 kg
1 bu = 35,2391 dm <sup>3</sup>
1cwt = 112lb = 50.8023 kg
1 mt=33.33 Bushels
1 st=907.1847kg

tr	traded level
unch	unchanged
unq	unquoted
RBD	refined, bleached and deodorized
PORAM	Contract specific. of the Palm Oil Refiners Association of Malaysia